

Partnering for Eternity (PFE) and ASSIST Grant Programs



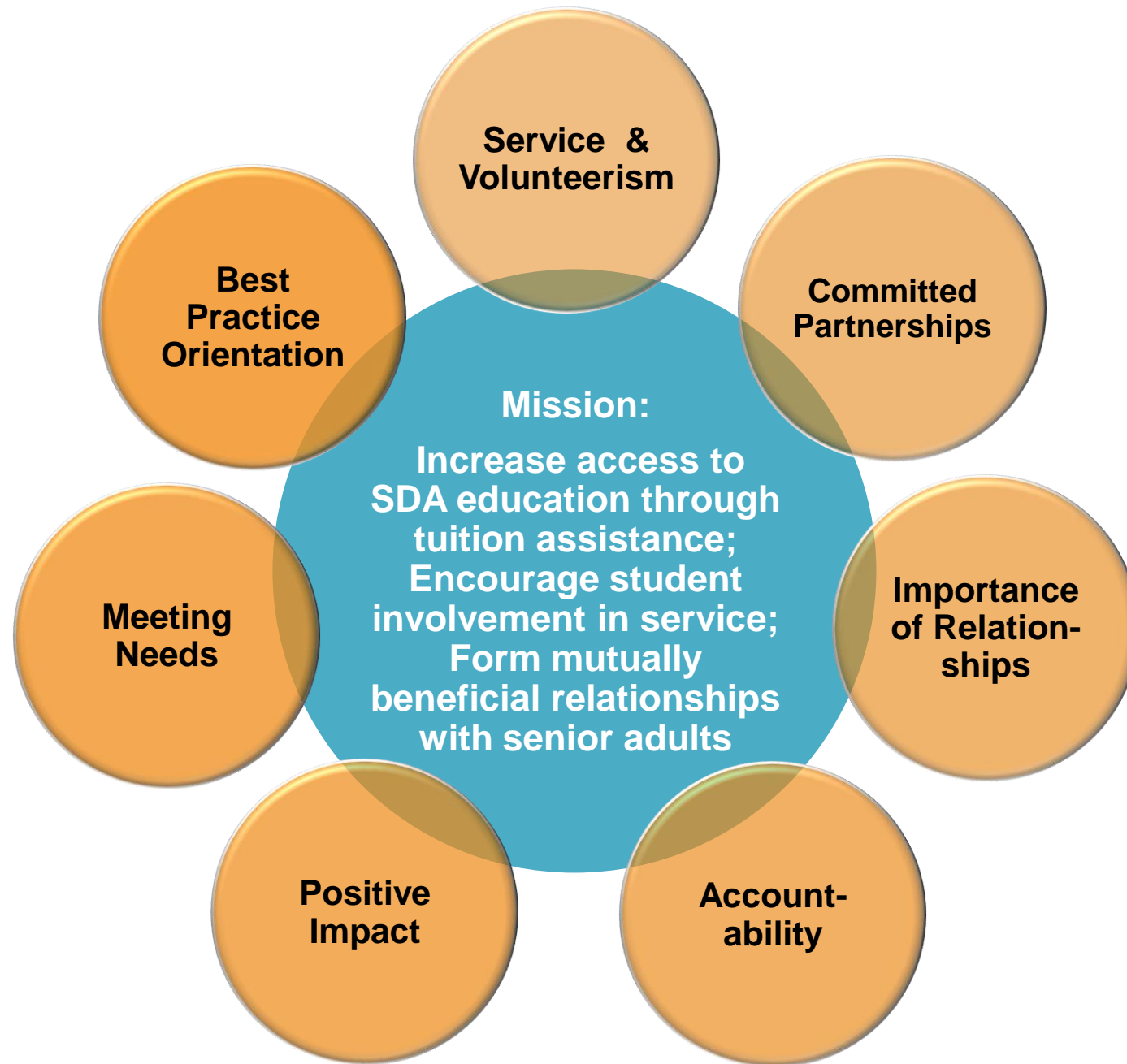
AT SOUTHERN ADVENTIST UNIVERSITY



“Honor your mother & father...and love your neighbor as yourself” Matt. 19:19

...take care to remember that God will use you at any age, and any stage. There is no age limit to the way He works, and His is a love that never grows old.





PFE Program Snapshot



Students (accompanied by their parents) visit with older adults weekly and engage in companion and some light chore activities.

Examples of these activities are reading, playing games, tutoring, going for walks, raking leaves, and helping to prepare meals.

Benefits We Have Observed in Schools

1. Gives schools a wonderful way to serve and make positive connections in their local communities
2. Helps schools retain students and increase enrollment
3. Provides opportunities to offer some vocational training/certifications for high school students



Benefits We Have Observed...

for your students and their families

1. Helps families afford an SDA Christian education (in some cases $\frac{1}{4}$ of their tuition)
2. Instills an attitude of service in children
3. Create opportunities for students to improve the health and livability of our communities
4. Encourages students to explore career choices and gain resume-building experiences

Benefits We Have Observed...

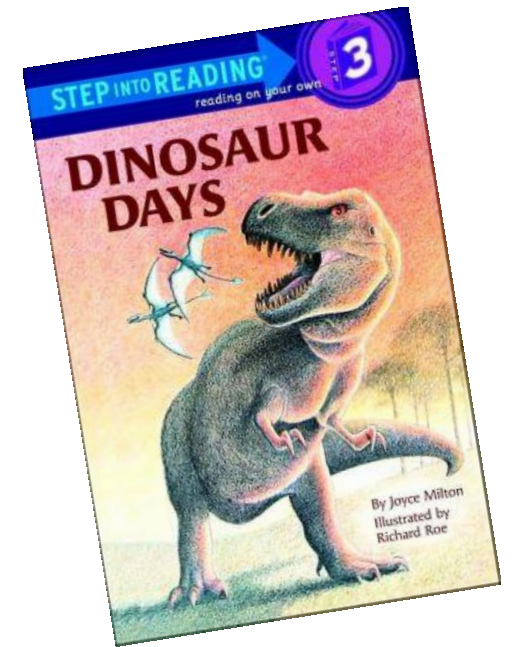
for Senior Adults and your communities



1. Improve senior adults' daily living and quality of life through positive, mutually beneficial relationships with students
2. Create opportunities for senior adults to mentor and positively influence a young student
3. Patient Centered Care is enhanced through the extra attention and help the senior adult receives from the student

Mutually Beneficial Relationships

“I showed Mr. Jones my favorite stuffed animals. I showed Mr. Jones my sash from Adventurer Club. I read a book called ‘Dinosaur Days’ to Mr. Jones. He told me a story about when he was a little boy. We had a GREAT TIME!” first-grader Miguel said about his visit with his senior adult. (Waldwick, New Jersey)



Mutually Beneficial Relationships

Eighth-grader Alexandria wrote, “This week we continued to work on our aprons. We finished sewing the ties and then we turned them right-side-out. We talked about the wedding dress she made, how hard it was and how long it took to finish. I had a lot of fun. I can’t wait to go visit Mrs. Mattson next week!” (Dunlap, Tennessee)



TEACHING kids
to sew



Mutually Beneficial Relationships Last

After graduating two years ago, Seth's senior mentors' still call him to program TV remote controls, troubleshoot their cell phones and home computer.



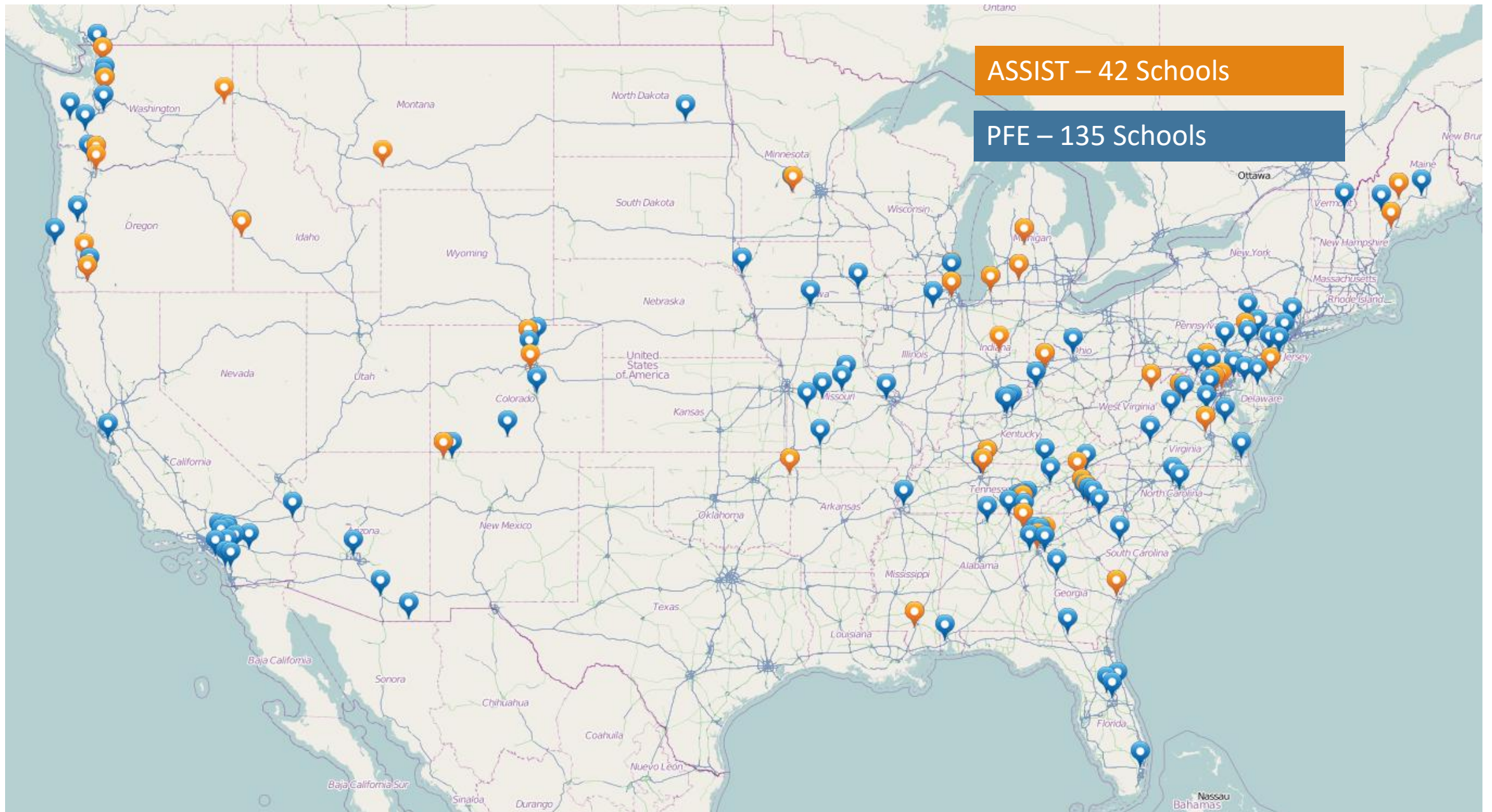
Matching Grant, Nationwide (as of 9-2016)

National (39 schools) ASSIST subtotal 2015-2016		501	\$ 1,005,634.00	\$ 804,507.20	\$ 201,128.80
National (111 schools) PFE subtotal 2015-2016		1524	\$ 1,339,710.00	\$ 1,071,768.00	\$ 267,942.00
National (42 schools) ASSIST subtotal 2016-2017		594	\$ 1,000,929.00	\$ 779,620.00	\$ 240,209.00
National (135 schools) PFE subtotal 2016-2017		2062	\$ 2,001,100.00	\$ 1,592,780.00	\$ 397,628.00
National Total 2015-2016		2025	\$ 2,345,344.00	\$ 1,876,275.20	\$ 469,070.80
National Total 2016-2017		2656	\$ 3,002,029.00	\$ 2,372,400.00	\$ 637,837.00

- This year, more than 3,500 senior citizens will benefit from these visits.

ASSIST – 42 Schools

PFE – 135 Schools





Getting Started in ASSIST and PFE



Step 1. Select Your Team



- There are several roles the grant administrator will need to fill. And, one person can assume several roles.

PFE	ASSIST
Coordinator	Student Supervision
Parent Liaison	
Senior Mentor Liaison	Senior Mentor Liaison
Program Evaluation	Program Evaluation
Fundraising	Fundraising
Financial Administration	Financial Administration
Community Networking	Community Networking

- Teams can include a mixture of full-time staff, part-time staff, pastors, church members, parents, or volunteers.

Step 2: Select Students

- Potential Student Participants receive and complete application form
- Develop and use criteria for accepting students into the program:
 - Financial need
 - Passion for service
 - Previous experience (PFE or other)
 - Grade level
 - Desire for intergenerational relationship and has already worked to find a Senior Mentor that is a good match
 - In need of a positive relational connection



Step 3: Select Senior Mentors

- Develop and use criteria to identify and select senior mentors:
 - Gender
 - Interests or hobbies
 - Personality styles
 - Healthy cognitive skills and abilities
 - Church or family/friend recommendation
 - Proximity to school
 - Ability to commit time
 - Student request
 - Enthusiasm to mentor students
 - Needs some company



PFE/Assist: Concern for Safety Awareness

- ❖ Ensure that at least one parent/guardian accompanies their student on each visit
- ❖ Ensure that parents are responsible for the safety of their own child(ren)
- ❖ Ensure parents communicate where students are assigned and who the senior mentors are
- ❖ Parents should notify pastor or family member if senior mentor begins experiencing safety issues

**EVERY KID IS
ONE CARING
ADULT AWAY
FROM BEING
A SUCCESS
STORY.**

—Josh Shipp

Visit our website at www.southern.edu/assist

